

TAXING UNIT: 25

PART OF N.W. 1/4 OF SECTION 17, T.6N.,R.1W., S.L.B.&M

IN OGDEN CITY SCALE 1" = 100'

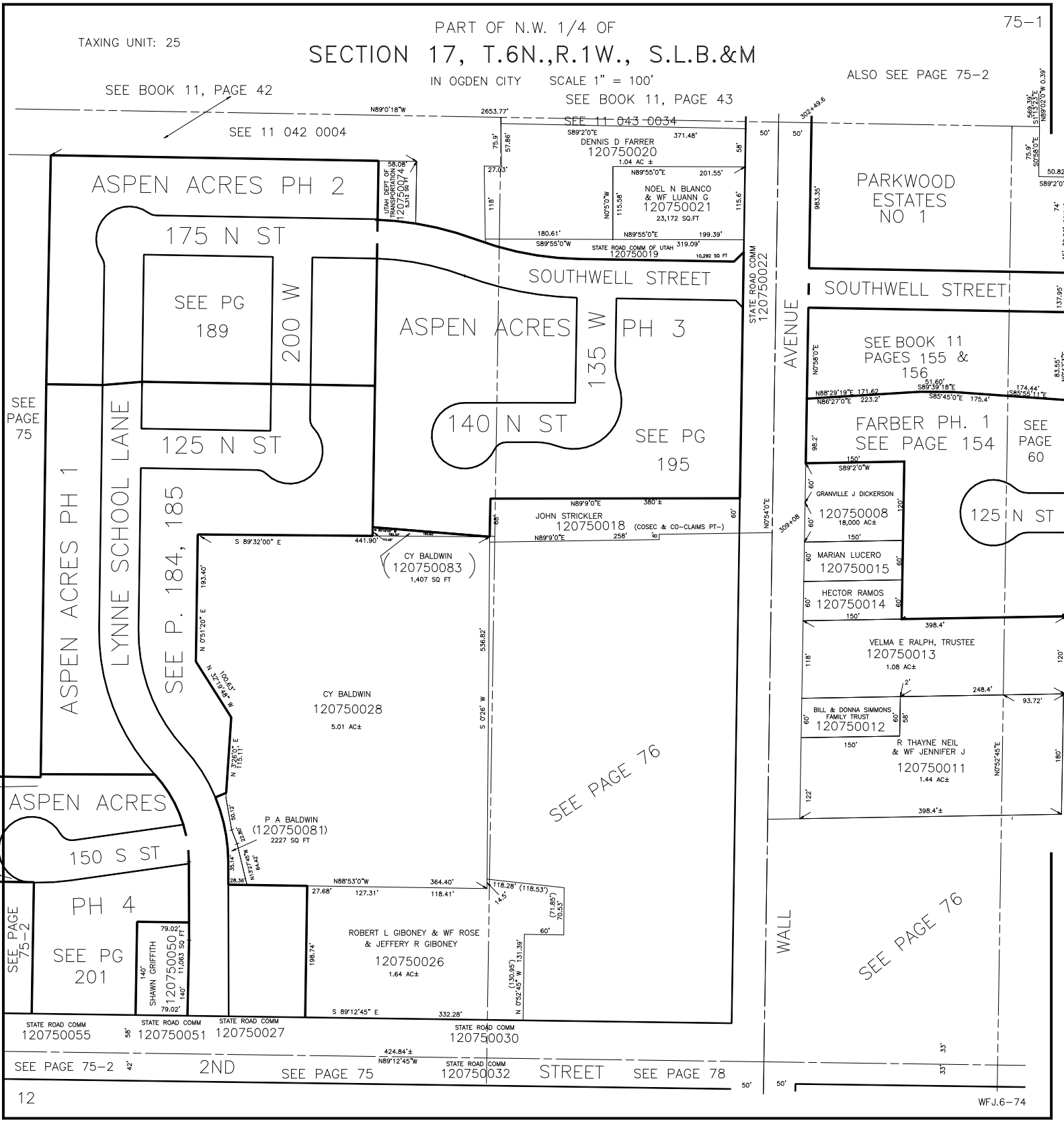
ALSO SEE PAGE 75-2

SEE BOOK 11, PAGE 42

SEE BOOK 11, PAGE 43

SEE 11 042 0004

SEE 11 043 0034



SEE PAGE 75

SEE PAGE 75-2

SEE PAGE 76

SEE PAGE 76

STATE ROAD COMM 120750055

STATE ROAD COMM 120750051

STATE ROAD COMM 120750027

STATE ROAD COMM 120750030

SEE PAGE 75-2

2ND

SEE PAGE 75

STATE ROAD COMM 120750032

STREET

SEE PAGE 78